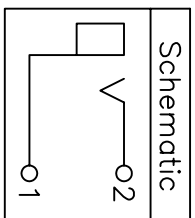
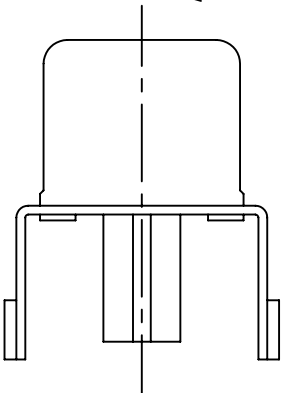
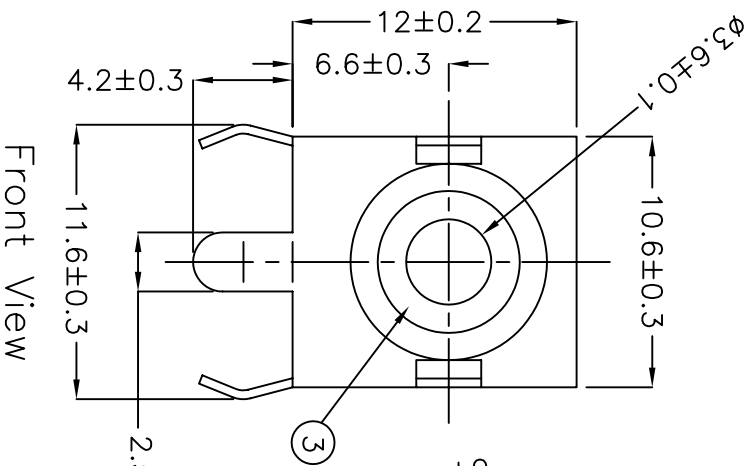


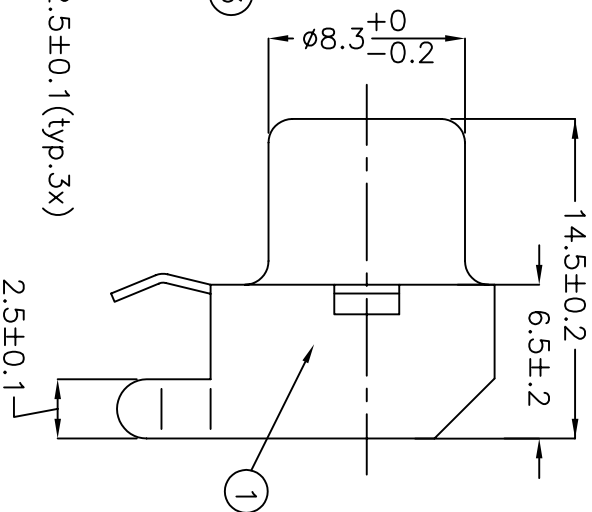
Top View



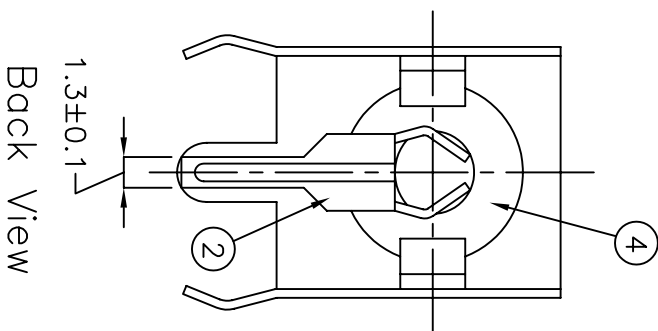
- Specifications:
1. Insulation Resistance: 100MΩhms min. (initial)
 2. Contact Resistance (initial): 30mΩhms max at 100mA(max) 1KHz.
 3. Dielectric Withstand Voltage: AC 500V, 60Hz for 1 minute.
 4. Insertion Force: 3Kgs max. Extraction Force: 0.08Kgs min.
 5. Humidity Test: 40±2. 90~95%, 48 hours.



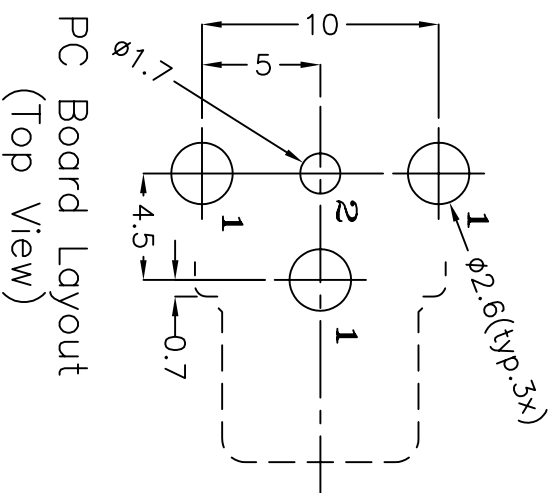
Front View



Side View



Back View



PC Board Layout (Top View)

Part Number	Finish	Color Index
R CJ-011	Black Color	
R CJ-012	Red Color	
R CJ-013	White Color	
R CJ-014	Yellow Color	
R CJ-015	Blue Color	
R CJ-016	Green Color	
R CJ-017	Orange Color	

No.	Description	Material	Qty.	Finish
1	Body	Steel	1	Tin Plated
2	Terminal	Brass	1	Tin Plated
3	Insulator	Bakelite	1	See Color Index
4	Insulator	PBT	1	See Color Index



CUI INC

9615 SW Allen, Suite 103
 Beaverton, OR 97005
 Phone: (503) 643-4899
 800-275-4899
 Fax: (503) 372-1266
 Website: www.cui.com

TITLE: **RCA Jack, Metal, Right Angle, PCB Mnt.**

PART NO: **R CJ-01X** UNITS: **Millimeters**

DRAWN BY: **Todd R. White** APPROVED BY: **SCALE: 3X**